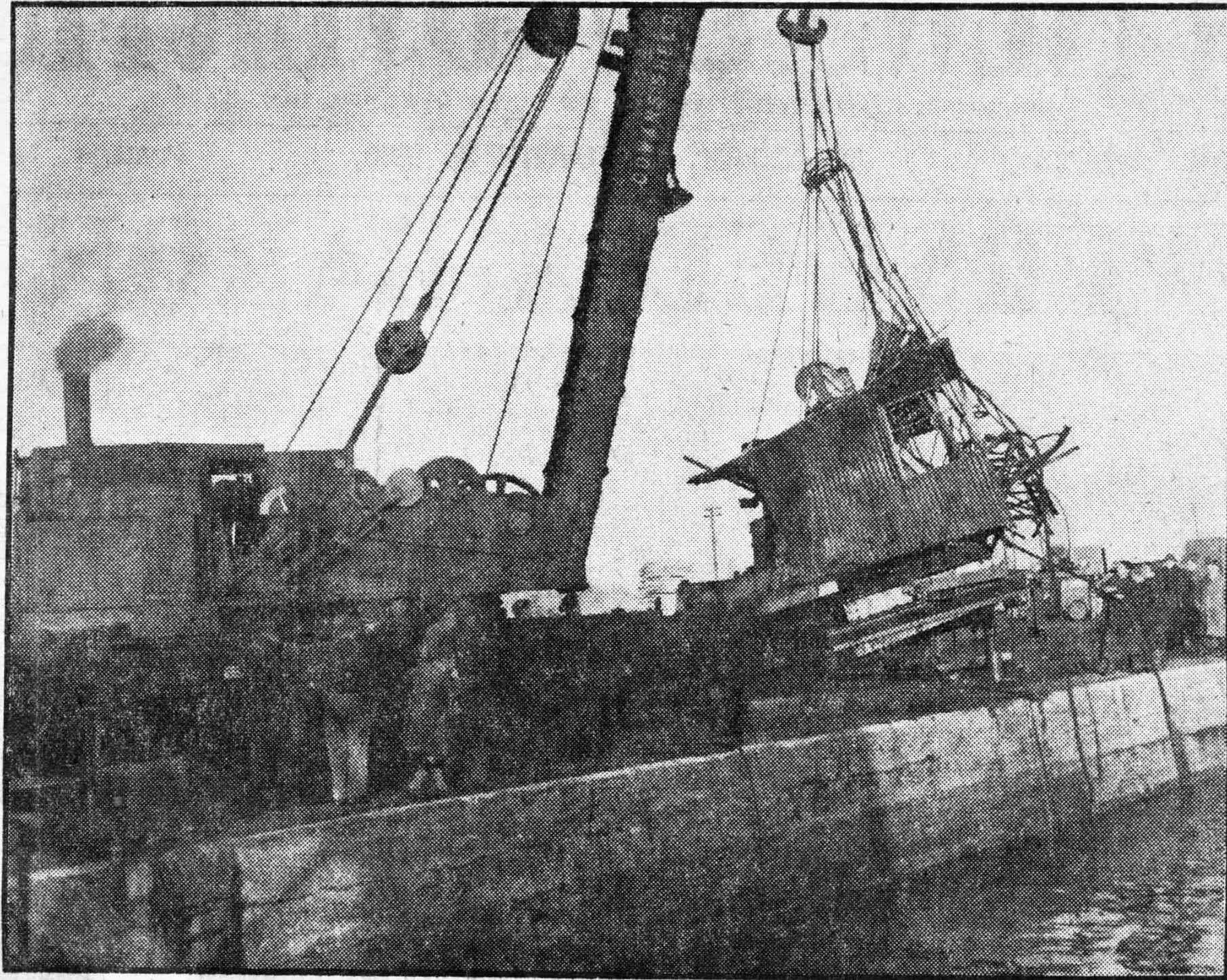


Crane lifts crane at Lynn docks



AFTER nearly a fortnight on the bottom of the Bentineck Dock at Lynn, the 28-ton electric crane which ran out of control and plunged over the end of a temporary section of the new oil jetty, is hoisted back on to dry land. Here it is seen being lowered to the ground, firm-

ly held by the powerful jib of a British Railways steam breakdown crane which was brought to Lynn specially for the job. The tangled metal work to the right of the damaged cabin is the base of the jib. The remainder had been cut away previously.

Lynn News Cutting Tuesday January 3rd 1956